

QMotion Honeycomb Shades Changing Springs in the Field



IMPORTANT

Read, study, and thoroughly understand all instructions before you begin. Always wear proper safety equipment and eye protection. **FAILURE TO DO SO COULD LEAD TO INJURY!**

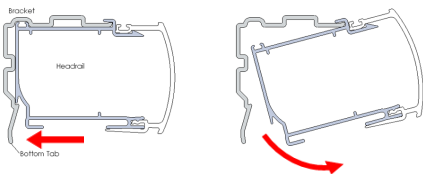
Tools Required

- Safety Glasses
- Phillips Screwdriver
- Work Gloves
- Masking Tape
- Long Nose Locking Pliers

STEP 1

Remove the Shade from the Window

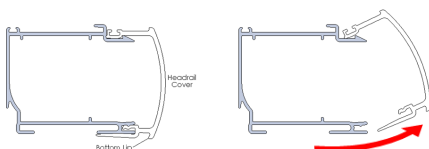
- Fully raise the shade. [Note: If the spring failure prevents the shade from being raised to the full open position, collect the fabric and bottom rail and lift to the open position to access the mounting brackets. If needed, use masking tape to help support the fabric and bottom rail during shade removal.]
- While support the shade, press against the bottom tab of the mounting bracket and rotate the back of the headrail downward and out from the bracket.



STEP 2

Remove the Headrail Cover

- Remove the headrail cover by pulling the bottom lip of the cover away from the shade to



release the retention feature on the cover. Tilt the bottom of the headrail cover upwards and pull away from the shade.

STEP 3

Secure the Driveshaft

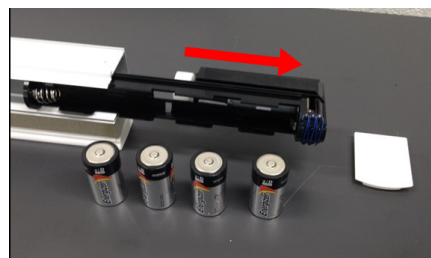
- Using a pair of long nose locking pliers, crimp shade driveshaft as shown below. ALWAYS ensure locking pliers are securely attached to the driveshaft.



STEP 4

Remove the MCA

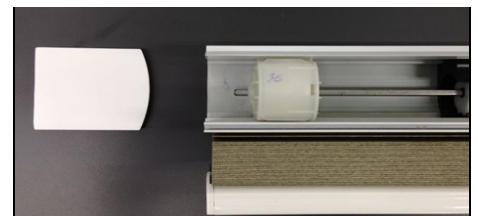
- Remove the MCA locking screw located on the back of the headrail.
- Remove the RH end cap, slide the MCA out the end of the headrail, and remove the batteries from the MCA.



STEP 5

Remove the Spring Assembly/Assemblies

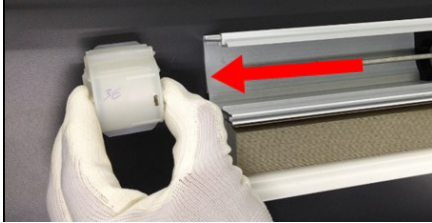
- Remove the LH end cap from the headrail and slide the spring closest to the end of the headrail towards the end of the driveshaft, leaving roughly 1/2" of the driveshaft exposed.



- With the spring assembly near the end of the driveshaft, firmly grasp the spring assembly, holding the spring housings together. With caution, slowly remove the spring assembly from the headrail and carefully discard the removed spring assembly. Repeat step for all remaining spring assemblies. [Note: Once the spring assembly disengages the driveshaft, the existing preloads on the spring will be released causing the spring to unwind quickly. It is extremely important to continue to securely hold the spring assembly together until it has been discarded.]



CAUTION: REMOVED SPRINGS WILL BE PRELOADED! Failure to securely hold the spring assembly together during removal could cause separation of the spring housings allowing the spring to quickly unwind, expanding outside the housing, and potentially **LEAD TO INJURY**.



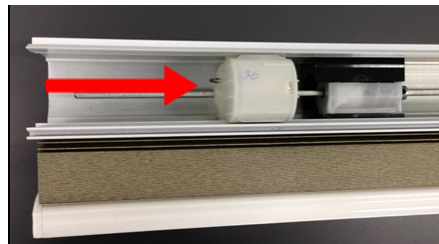
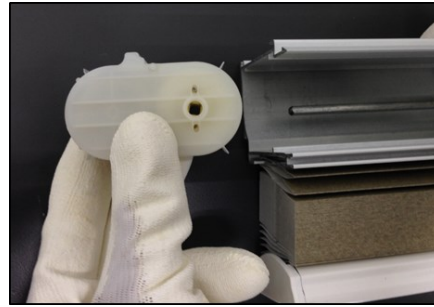
STEP 6
Install the First Replacement Spring Assembly and Reinstall the MCA

- Remove the locking pliers from the driveshaft.
- Prior to installing the first replacement spring assembly, the shade should be in the fully open position with the string completely wound onto the spools. *[Note: If the shade was removed from the mounting brackets by collecting the fabric due to the spring failure preventing the shade from retracting the strings, lay the shade on a clean surface with the front of the headrail facing upwards and fully extend the shade to its maximum height. With the shade fully extended, rotate the driveshaft towards the back of the headrail (see below) until the strings are taut and completely wound onto the spools.]*



- With minimal rotation of the driveshaft, align the driveshaft

with the spring output drum. While holding the driveshaft in position, carefully slide spring assembly into the headrail.



- *[Motorized Only]* Prior to removing the locking pin from the first spring assembly installed, reinstall the MCA and the MCA locking screw.



STEP 7
Install the Remaining Replacement Spring Assembly/Assemblies

- Remove locking pin from the first spring assembly installed.



- Carefully install the remaining replacement spring assembly/ assemblies into the headrail and remove the locking pin from each spring assembly after it is installed. *[Note: After the removal of the first locking pin, the driveshaft may slightly rotate and prevent the remaining spring assembly/assemblies from properly aligning with the driveshaft. In this situation, use the locking pliers to rotate the driveshaft towards front of the headrail in order to align the driveshaft with spring output drum.]*

STEP 8
Reinstall the Shade in the Window

- Reinstall the MCA headrail cover and both headrail end caps. *[Note: When reinstalling the headrail cover with the shade in the full open position, check to make sure none of the fabric was trapped between the extended leg on the cover and the headrail.]*
- Guide the headrail into the mounting brackets so the front of the bracket slides under the front groove on the top of the headrail.
- While pressing against the front of the headrail cover, gently rotate the back of the headrail up until it snaps into the mounting brackets.

