

QADVANCED FASCIA
INSTALLATION INSTRUCTIONS

IMPORTANT

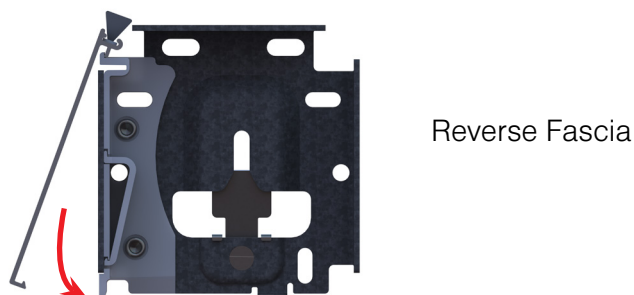
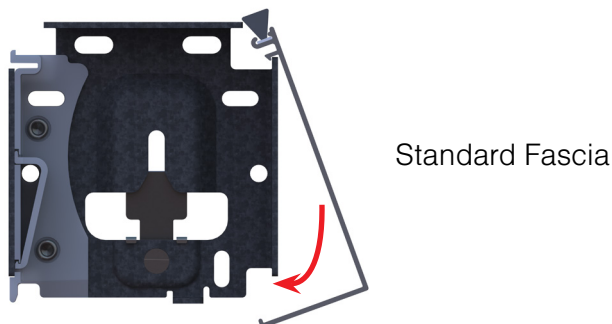
Read and understand all instructions before installing. Always wear personal protection equipment including safety glasses and gloves. Use a ladder per its manufacturer's instructions. Work safely!

FRONT FASCIA INSTALLATION

(1) Position the Fascia so that it hooks and engages properly onto the top of the bracket as shown below.

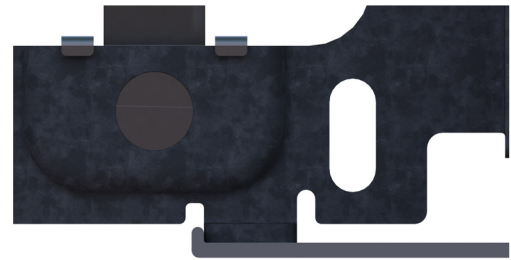


(2) With the top properly engaged, gently rotate the Fascia down toward the bracket as shown.

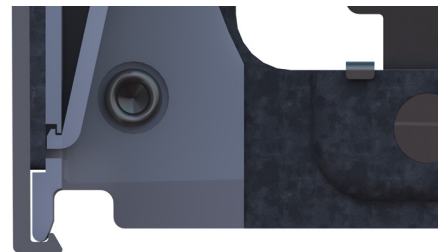


(3) The Fascia must lock to the bracket. You will hear the bottom "Snap" into the lock position on the bottom of the bracket.

Standard Fascia



Reverse Fascia



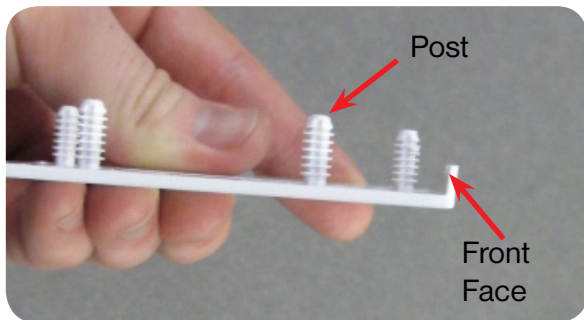
(4) Check to be sure the Fascia is properly engaged and locked onto the brackets by grabbing the center of the Fascia and tugging away from the shade and then towards the ground.



Note: One additional fascia support is needed per 10 ft. of standard fascia and 2 additional fascia supports are needed per 10 ft. of reverse fascia. The top of any additional fascia supports must be level with the top of the brackets, and there should be equal spacing between the brackets and any fascia support.

END CAP FASCIA INSTALLATION:

(13) For outside mounted shades, align the posts on the back side of the Fascia End Cap with the side mount fastener locations and snap the Fascia End Cap on the bracket.

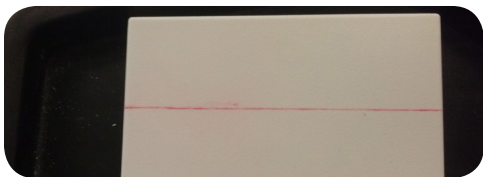


Note: *If the brackets have been side mounted or are COMPLETELY embedded within the window jamb's end caps will NOT be installed.*

(14) Using a Measuring Tape, measure the distance that the Mounting Brackets stick out past the window as shown.



(15) Measure this distance from the Front Face of the Fascia and mark the Fascia End Cap, extend the mark to the edges of the Fascia as shown below.



(16) Using a Utility Knife cut the Fascia End Cap straight along the previously made mark to score the plastic and break the End Cap along the score mark, shown below. (The plastic will need to be cut multiple times to get a deep enough score line to break away the excess plastic).

Warning: Exercise caution with the Utility Knife to avoid injury



(17) Using Sandpaper or a File smooth the cut edge of the Fascia End Cap so that it will sit flush with the wall.

(18) Attach the Fascia End Cap to the exposed bracket using the posts along the back of the Fascia End Cap if applicable. Otherwise, use the Double Sided Tape or some other form of adhesive to secure the Fascia End Cap to the Mounting Bracket.

