

Qmotion® Automated Honeycomb Shade Instruction Manual



Discover
beauty in motion

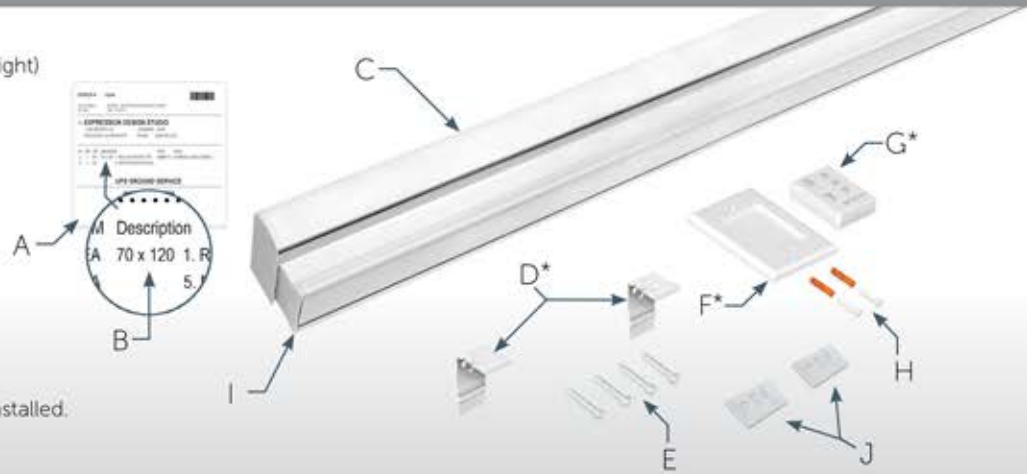


1 Getting Started

► Verify Package Contents

- A. Packing List
- B. Packing List Dimensions (width x height)
- C. Shade Assembly/Front Cover
- D. Shade Brackets
- E. Bracket Mounting Hardware
- F. Remote Control Wall Station*
- G. Remote Control*
- H. Wall Station Mounting Hardware*
- I. Bottom Bar
- J. Spacers

* Package contents may vary.
** Shades are shipped with packaging around them. For protection, the packaging can be left on until fully installed.



► Tools Needed

Read and understand all instructions prior to installation. Complete all instructions prior to use.

You will need a:

- K. Measuring Tape
- L. Drill with 3/32" Bit & 1/4" Nut Driver
- M. Pencil
- N. #2 Phillips Head Screwdriver
- O. Flat Head Screwdriver
- P. Level

If the installation area is out of reach, use an appropriately sized ladder and safely follow manufacturer's instructions for use.



► Planning and Preparation

Verify there are no latches/locks, window cranks, handles, alarm sensors, curtain tie-backs, window mullions, etc. in the shade's path. Remove any obstructions or adjust the mounting depth of your shade brackets.

Plan accordingly for accessories that may be installed.

Ensure adequate structure (wood studs, metal studs, etc) is available to mount screws. Expansion anchors or toggle bolts may be required.

Depending on your installation area you may need to use different holes on your shade brackets than are illustrated.

Check to ensure that no obstructions will block the shade's movement.



2 Determine Mount Type

▶ 2a Top Mount

Follow the orange track on the next page of this instruction sheet to top mount your shade.

Top Mounted Shades are typically used for inside openings or for ceiling mount.

3 1/8"
Minimum Depth
Recommended



▶ 2b Back Mount

Follow the blue track on the last page of this side of this instruction sheet to back mount your shade.

Back Mounted Shades are typically used for outside mount.

Mounting
Height is Size
Dependent



3a Top Mount Installation



Step 3a.1

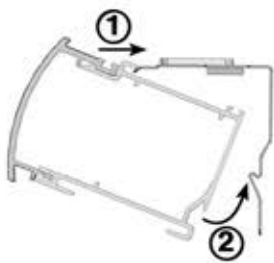
Measure 6 inches inward from each side of the opening. Mark with a pencil. If your shade has more than two brackets, the remaining brackets must be distributed evenly between these first two marks.

Temporarily place each bracket and mark the screw holes on the header or ceiling. Mounting depth of 3 and 1/8" is recommended to ensure that the shade mounts completely inside opening.



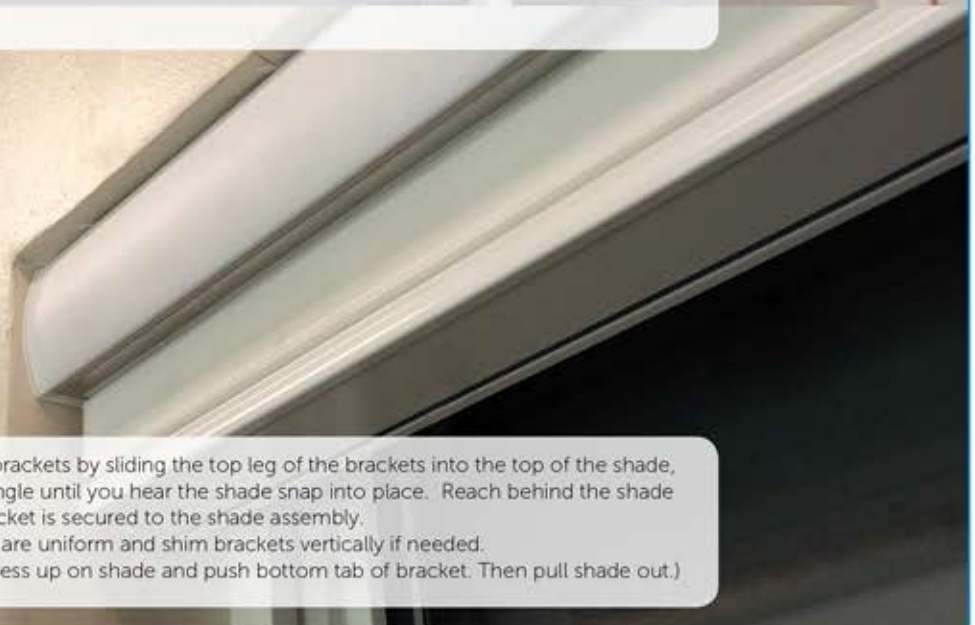
Step 3a.2

Drill screw pilot holes using a 3/32" drill bit. Align bracket and bracket spacer with all markings and holes and drive a screw using a 1/4" nut driver. Repeat for each bracket.

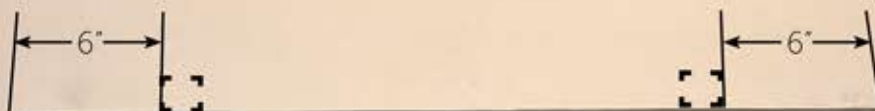


Step 3a.3

Hook the shade on the brackets by sliding the top leg of the brackets into the top of the shade, then pressing up at an angle until you hear the shade snap into place. Reach behind the shade and check that each bracket is secured to the shade assembly. Ensure that vertical gaps are uniform and shim brackets vertically if needed. (To remove shade just press up on shade and push bottom tab of bracket. Then pull shade out.)



3b Back Mount Installation



Step 3b.1

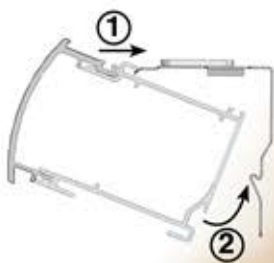
Measure 6 inches inward from each side of the opening. Mark with a pencil. If your shade has more than two brackets, the remaining brackets must be distributed evenly between these first two marks.

Temporarily place each bracket and mark the screw holes on the wall or mullion. Installing the brackets bottoms flush with the window opening or lower is recommended.



Step 3b.2

Drill holes in your bracket screw hole markings using a 3/32" drill bit. Align bracket and bracket spacer with all markings and holes and drive a screw using a 1/4" nut driver. Repeat for each bracket.



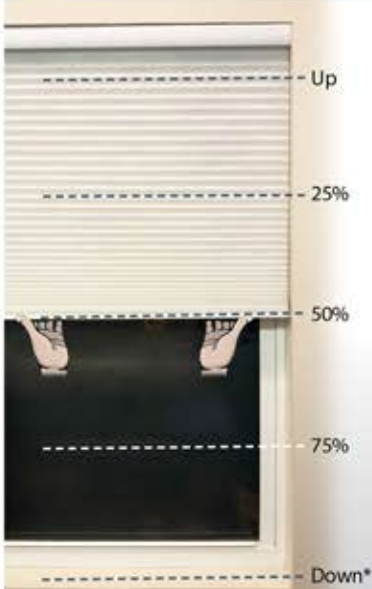
Step 3b.3

Hook the shade on the brackets by sliding the top leg of the brackets into the top of the shade, then pressing up at an angle until you hear everything snap into place. Inspect behind the shade and check that each bracket is secured to the shade assembly. Ensure that vertical overlaps are uniform and adjust brackets vertically if needed. (To remove shade just press up on shade and push bottom tab of bracket. Then pull shade out.)



4 Finishing Installation

▶ Activate Shade and Set Down Position



Your shade is unpowered until you activate it. To activate the shade and learn a new remote:

1. Remove Front Cover's (C) right-hand side to expose the batteries and battery pull-tab. (Refer to "Changing the Batteries" for proper Front Cover removal procedure.)
2. Remove the battery pull-tab to power the shade. Perform Step 3 within 1 minute of removing the battery pull-tab or shade deactivates and exits remote learn mode. To reactivate the 1 minute learn mode, cycle power by removing and then re-installing battery.
3. Press and hold UP button for approximately 5 seconds until shade begins to move up. Wait for shade to stop in Up position. The remote is now learned to the shade.
4. Press DOWN button to send shade to the factory default Down position. To reprogram this Down position, follow steps 4 through 7.
5. While shade is in factory preset Down position, press and hold DOWN button for approximately 5 seconds. Shade will move up slightly, then back down slightly and stop. Release the DOWN button.
6. Pull the Bottom Bar (I) to the desired DOWN position using both hands. The shade is now in Down Position Learn Mode. (If the bottom bar is pulled lower than the desired Down position, press the UP button to move the shade up, then press the DOWN button to stop the shade.)
7. When satisfied with Down position, press and hold the DOWN button for approximately 5 seconds until shade begins to move up. The shade is no longer in Down Position Learn Mode.
8. The shade will continue to move up until it reaches the head rail. After shade stops it is programmed and ready to use.

*Typical user-defined Down position shown

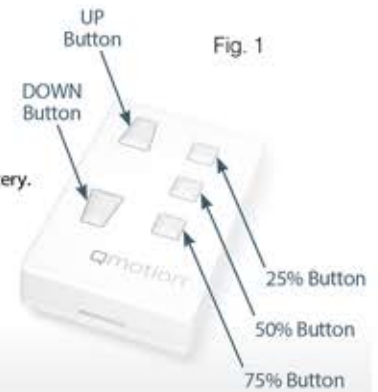


Fig. 1

! For more advanced programming, please refer to <http://qmotionshades.com/>

▶ Test Shade Operation



Press the DOWN button to move the shade to the Down position. While down, ensure that the shade appears straight, level, and that the gaps or overlaps are equal. Safely make adjustments to the brackets as needed. Adjust strings to ensure level operation and cut any excess string. When satisfied, complete installation by adding one more Screw (F) to each Shade Bracket (E).



▶ Install Wall Station

Step 1

Determine a convenient location for your Remote Control Wall Station (F). This is typically near an entrance to a room but can be placed anywhere in a room.

Step 2

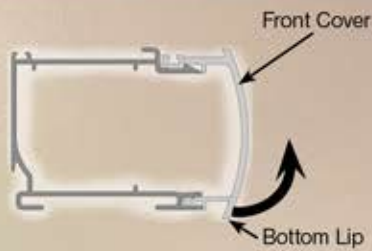
Hold the Remote Control Wall Station (F) in the desired location and use a level to ensure it is straight and/or level with other nearby wallplates. Mark holes with a pencil.

Step 3

Use the included screws and anchors (H) to fasten the wall station to the wall. Your Remote Control (G) will be held to the wall station with a built-in magnet.

If screws do not secure adequately to wall structure, use the supplied wall anchors.

5 Changing the Batteries



Step 1

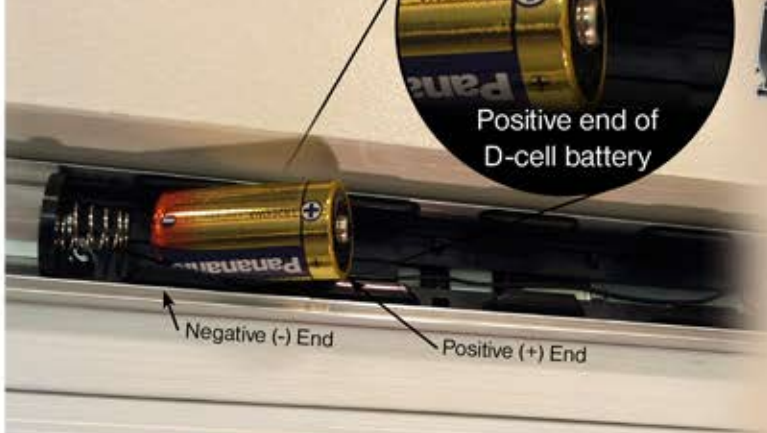
Remove the shade's front cover by pulling outward and up ward from its bottom front lip. Completely remove the cover from the shade.

Motor Controller



Step 2

Remove the batteries. Start from the middle battery and work to the outside batteries.



Step 3

Replace the batteries with fresh, D-Cell Alkaline batteries, placing the negative end of all batteries toward the spring as shown. Do not mix old and new batteries.

Step 4

Re-attach the shade's front cover by aligning engagement features then snapping on cover top and bottom.

6 Troubleshooting

Symptom	Problem	Solution
Shade bottom bar (I) is not parallel to Front Cover (C)	Shade string not evenly tensioned.	Run shade to Down position. Run back up to Open position. Shade strings should tension uniformly.
Motor is running but shade is not moving	Motor controller disengaged	Remove Front Cover and slide motor controller over to engage spool drive shaft.
Shade is unresponsive to the remote.	Remote not learned, or batteries may be dead	
Shade is unresponsive to a specific button.	Stuck in Learn Mode.	Wait 1 minute for the shade to automatically exit Learn Mode. All other buttons except for this specific position's button will work. However, while in Down position Learn Mode, pressing the DOWN button will stop the shade if moving up.

If you still experience difficulties, please call toll-free 1-877-849-6070.

Qmotion®

www.qmotionshades.com



MODEL: HRH-WS02
WALL STATION TRANSMITTER
FCC ID: X6P-0003300
IC: 8832A-0003300

MODEL: HRH-PT05
PORTABLE TRANSMITTER
FCC ID: X6P-0003186B
IC: 8832A-0003186B

MODEL: QHCS-433AM
HONEYCOMB SHADE
CAN RSS-GEN/CNR-GEN

MODEL: QTL74
QMOTION REMOTE
FCC ID: X6P-HR110845
IC: 8832A-HR110845

This device complies with Part 15 of the FCC Rules. Operation is subject to the following two conditions:

- 1) This device may not cause harmful interference, and
- 2) this device must accept any interference received, including interference that may cause undesired operation.

Warning: Changes or modifications to this device not expressly approved by HomeRun Holdings could void the user's authority to operate the equipment.

*NOTE: This equipment has been tested and found to comply with the limits for a Class B digital device, pursuant to Part 15 of the FCC Rules. These limits are designed to provide reasonable protection against harmful interference in a residential installation.

This equipment generates, uses, and can radiate radio frequency energy and, if not installed and used in accordance with the instructions, may cause harmful interference to radio communications. However, there is no guarantee that interference will not occur in a particular installation. If this equipment does cause harmful interference to radio or television reception, which can be determined by turning the equipment off and on, the user is encouraged to try to correct the interference by one or more of the following measures: • Reorient or relocate the receiving antenna. • Increase the separation between the equipment and receiver. • Connect the equipment into an outlet on a circuit different from that to which the receiver is connected. • Consult the dealer or an experienced radio/TV technician for help.*

The term "IC:" before the radio certification number only signifies that Industry Canada technical specifications were met.

This Class B digital apparatus meets all requirements of the Canadian Interference Causing Equipment Regulations. Operation is subject to the following two conditions:

- (1) this device may not cause harmful interference, and (2) this device must accept any interference received, including interference that may cause undesired operation.

Cet appareillage numérique de la classe B répond à toutes les exigences de l'interférence canadienne causant des règlements d'équipement. L'opération est sujette aux deux conditions suivantes: (1) ce dispositif peut ne pas causer l'interférence nocive, et (2) ce dispositif doit accepter n'importe quelle interférence reçue, y compris l'interférence qui peut causer l'opération peu désirée.

Do not operate at temperatures below 32° F or above 130° F. End user must ensure that shade being used is fire resistant. Keep transmitter away from children. Periodically examine assembly and brackets for signs of wear and discontinue use if repair is necessary. The controller and transmitter assemblies contain no serviceable parts.